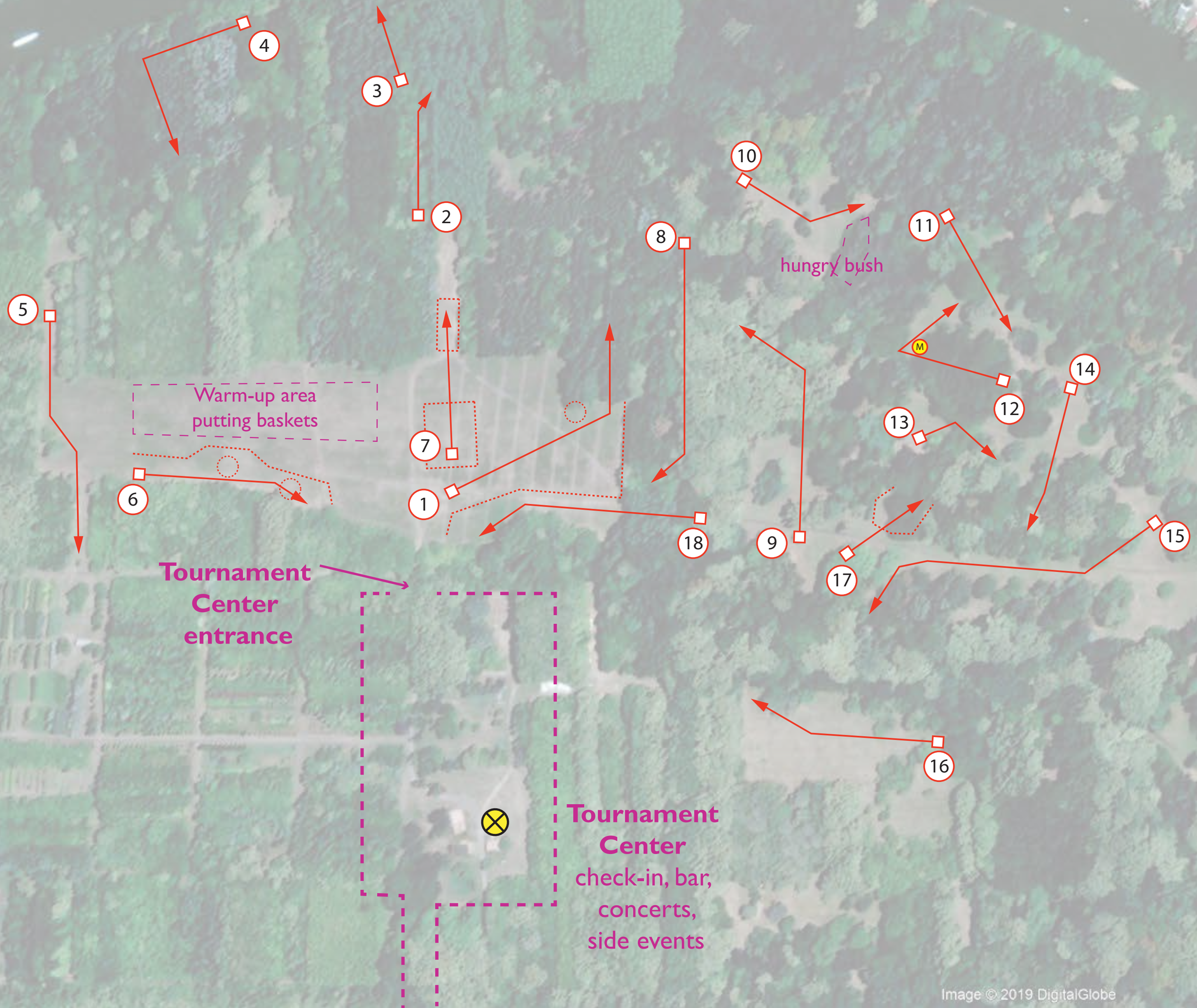


**CEDGC 2021 - Hole Description**  
 #hole number (par value / distance in m)

- #1** (4 / 175) - small OB lake by forest entrance, common OB line with #18
- #2** (3 / 95)
- #3** (3 / 80)
- #4** (4 / 145) - sweet-spot marked by white stake
- #5** (4 / 220)
- #6** (4 / 180) - OB on the left side of fairway, two OB lakes on the fairway
- #7** (3 / 135) - from island to island, everything else is OB  
 MPO/MP40 divisions: bunker rules, any shot landing in OB must be rethrown with no penalty  
 MJ18, FJ18, FPO: OB areas are hazard, take one penalty and continue playing
- #8** (4 / 165)
- #9** (5 / 225)
- #10** (3 / 125) - watch out for "hungry bush"
- #11** (3 / 125)
- #12** (4 / 155) - mandatory tree to be passed on right, proceed to Drop Zone with +1 penalty if mando is missed
- #13** (3 / 108)
- #14** (3 / 92)
- #15** (5 / 240)
- #16** (3 / 120)
- #17** (3 / 95) - island hole, tee-shot must land safe, otherwise proceed to DZ with +1 penalty. From DZ normal OB rules.
- #18** (4 / 225) - OB around the right side of fairway on the meadow

**TOTAL (65 / 2795)**



~ 100m

Arboretum Entrance, parking